



PRODUCT CATALOGUE



www.ssttechnology.co.in

VANDAL PROOF & PLASTIC DOME CAMERA SERIES

Basic Features

- Smart 3 DNR and DWDR. Anti-Ghost Effect
- Adopt "Special Optical Low Pass Filter
- Anti Noise at low light
- Avoid IR Reflection to Provide Perfect Video
- Perfect Solution for Day and Night Applications
- 1080P Ultra High Resolution above 2 Megapixel
- Excellent Picture Quality
- White Color Available
- Vandal Proof IR Dome Camera
- High Sensitivity SONYC-Mos Sensor
- IR Cut Filter Auto Color & Mono Switching in low light
- High Efficiency IR LED Radiant Distance 20 M / 30 M
- Automatically Activates LED in low light
- High Sensitivity Sensor
- Housing and Bottom Chassis Integrated



MODEL	STIR-AD2PL2	STIR-AD5ML2	STIR-AD8GL2	STIR-AD5MV2
Image Sensor	1/2.9" Sony C-Mos	1/3" Sony CMOS	1/3" Sony CCD	1/3" Sony CCD
Horizontal Resolution	2 Megapixel 1920*1080	5 Megapixel 2592*1944	8 Megapixel 3840*2160	5 Megapixel 3840*2160
Video Output Mode	AHD/TVI/CVI 30/fps	AHD/TVI 30/fps	AHD/TVI 30/fps	AHD/TVI 30/fps
Signal System	PAL & NTSC	PAL & NTSC	PAL & NTSC	PAL & NTSC
Focus Length	Fixed 3.6mm/F2.0	Fixed 3.6mm/F2.0	Fixed 3.6mm/F2.0	2.8-12mm Varifocal
Infrared LED	14u x 18PCS, 20M	14u x 18PCS, 20M	14u x 18PCS, 20M	14u x 18PCS, 20M
Shell	Plastic, White Case	Metal, White IP67 Case	Glass, White IP67 Case	Metal, White IP67 Case
Power Supply	DC 12V 500mA	DC 12V 550mA	DC 12V 600mA	DC 12V 650mA
UTC Controller	Yes	Yes	Yes	Yes
OSD Menu	Yes	Yes	Yes	Yes
WDR & DNR	Yes	Yes	Yes	Yes
IR Cut Filter	Yes	Yes	Yes	Yes
Weight	300g	450g	450g	500g

COLOR VIEW DOME CAMERA SERIES

Basic Features

- Vandal Proof Warm light/Star light Dome Camera
- High Sensitivity 1/2.8 Starvis Back-illuminated Sensor
- Support Warm white (4000K) up to 25m
- Full Color image series Adopt Special Optical Low Pass Filter
- Automatic Active Warm Light in low Brightness
- Housing and Bottom Chassis Integrated
- Perfect Solution for Day and Night Color Pitcher Applications
- 1080P Ultra High Resolution above 2 Megapixel
- White Color Metal Housing
- Avoid IR Reflection to Provide Perfect Video
- Smart AI DNR, DWDR and Anti Ghost Effect
- IR Cut Filter, Auto Color & Mono Switching in low light



MODEL	STCV-AD2ML2	STCV-AD5ML2	STCV-AD8ML2	STCV-AD5MZ3
Image Sensor	1/2.8" Sony Starvis	1/2.8" Sony Starvis	1/2.8" Sony Starvis	1/2.8" Sony Starvis
Horizontal Resolution	2 Megapixel 1920*1080	5 Megapixel 2592*1944	8 Megapixel 3840*2160	5 Megapixel 2592*1944
Video Output Mode	AHD/TVI 30/fps	AHD/TVI 30/fps	AHD/TVI 25/fps	AHD/TVI 30/fps
Focus Length	Fixed 3.6mm/F2.0	Fixed 3.6mm/F2.0	Fixed 3.6mm/F2.0	2.7-13.5mm Varifocal
Infrared LED	Warm white 4000K 25m	Warm white 4000K 25m	Warm white 4000K 25m	Warm white 4000K 30m
Day / Night	Color image	Color image	Color image	Color image
Shell	White Metal IP67 Case	Metal, White IP67 Case	White, Glass IP67 Case	Metal, White IP67 Case
Power Supply	DC 12V 500mA	DC 12V 600mA	DC 12V 650mA	DC 12V 650mA
UTC Controller	Yes	Yes	Yes	Yes
OSD Menu	Yes	Yes	Yes	Yes
WDR & DNR	Yes	Yes	Yes	Yes
IR Cut Filter	Yes	Yes	Yes	Yes
Weight	500g	500g	500g	800g



LONG DISTANCE BULLET CAMERA SERIES



MODEL	STIR-AB2PL2	STIR-AB5ML2	STIR-AB8ML2	STIR-AB5MV4
Image Sensor	1/2.9" Sony C-Mos	1/3" Sony CMOS	1/3" Sony CCD	1/3" Sony CCD
Horizontal Resolution	2 Megapixel 1920*1080	5 Megapixel 2592*1944	8 Megapixel 3840*2160	5 Megapixel 2592*1944
Video Output Mode	AHD/TVI/CVI 30/fps	AHD/TVI 30/fps	AHD/TVI 30/fps	AHD/TVI 30/fps
Signal System	PAL & NTSC	PAL & NTSC	PAL & NTSC	PAL & NTSC
Focus Length	Fixed 3.6mm/F2.0	Fixed 3.6mm/F2.0	Fixed 3.6mm/F2.0	2.8-12mm Varifocal
Infrared LED	14u x 18PCS, 20M	14u x 18PCS, 20M	14u x 18PCS, 20M	42u x 4PCS, 40M
Shell	Plastic, White Case	Metal, White IP67 Case	Glass, White IP67 Case	Metal, White IP67 Case
Power Supply	DC 12V 600mA	DC 12V 600mA	DC 12V 600mA	DC 12V 650mA
UTC Controller	Yes	Yes	Yes	Yes
OSD Menu	Yes	Yes	Yes	Yes
WDR & DNR	Yes	Yes	Yes	Yes
IR Cut Filter	Yes	Yes	Yes	Yes
Weight	350g	600g	650g	700g

Basic Features

- Water Proof IP67 IR Bullet Camera
- High Sensitivity SONY C-Mos Sensor
- Adopt "Special Optical Low Pass Filter
- High Efficiency IR LED Radiant Distance up to 60m
- Automatically Activates LED in low light
- High Sensitivity Sensor
- Housing and Bottom Chassis Integrated
- Smart 3 DNR and DWDR. Anti-Ghost Effect
- IR Cut Filter, Auto Color & Mono Switching in low light
- Anti-Noise at low light
- Avoid IR Reflection to Provide Perfect Video
- Perfect Solution for Day and Night Applications
- 1080P Ultra High Resolution above 2 Megapixel
- Excellent Picture Quality
- White Color Available

COLOR VIEW OUTDOOR CAMERA SERIES

Basic Features

- Rain Proof IP67 Warm light/Star light Full Color HD Cameras Offer 24hr Color Surveillance even in extremely dark night environment
- A Star Light Sensor and warm Supplemental lighting to deliver high quality color image in dark night Without the need for external IR or white light illumination
- High Sensitivity 1/2.8" SONY Starvis Back-illuminated CMOS Sensor
- Support Warm white (4000K) up to 25m
- High Sensitivity Image Sensor
- Smart AI DNR, DWDR and Anti Ghost Effect
- Perfect Solution for Day and Night Color Pitcher Applications
- Excellent Color Picture
- White Color Metal Housin



MODEL	STCV-AB2ML2	STCV-AB5ML2	STCV-AB8ML2	STCV-AB5MZ4
Image Sensor	1/2.8" Sony Starvis	1/2.8" Sony Starvis	1/2.8" Sony Starvis	1/2.8" Sony Starvis
Horizontal Resolution	2 Megapixel 1920*1080	5 Megapixel 2592*1944	8 Megapixel 3840*2160	5 Megapixel 2592*1944
Video Output Mode	AHD/TVI 30/fps	AHD/TVI 30/fps	AHD/TVI 25/fps	AHD/TVI 30/fps
Focus Length	Fixed 3.6mm/F2.0	Fixed 3.6mm/F2.0	Fixed 3.6mm/F2.0	2.7-13.5mm Varifocal
Infrared LED	Warm white 4000K 25m	Warm white 4000K 30m	Warm white 4000K 30m	Warm white 4000K 40m
Day / Night	Color image	Color image	Color image	Color image
Shell	White Metal IP67 Case	Metal, White IP67 Case	White, Glass IP67 Case	Metal, White IP67 Case
Power Supply	DC 12V 500mA	DC 12V 650mA	DC 12V 650mA	DC 12V 700mA
UTC Controller	Yes	Yes	Yes	Yes
OSD Menu	Yes	Yes	Yes	Yes
WDR & DNR	Yes	Yes	Yes	Yes
IR Cut Filter	Yes	Yes	Yes	Yes
Weight	750g	800g	800g	1500g

IP VANDAL PROOF DOME CAMERA SERIES



MODEL	STIR-ID2ML2	STIR-ID5GL2	STIR-ID8GL2	STIR-ID5MV4
Image Sensor	1/3" Sony CMOS	1/3" Sony CMOS	1/2.5" Sony CCD	1/3" Sony CCD
Horizontal Resolution	2 Megapixel 1920*1080	5 Megapixel 2592*1944	8 Megapixel 3840*2160	5 Megapixel 2592*1944
Solution	HISILICON HI3516E	HISILICON HI3516D	HISILICON HI3516A	HISILICON HI3516D
Lens	3.6mm / F2 .0	3.6mm / F2 .0	3.6mm / F2 .0	2.8 - 12mm Varifocal
IR Range	14u x 18 PCS, 20 M	14u x 18 PCS, 20 M	14u x 18 PCS, 20 M	14u x 18 PCS, 20 M
Weather Proof Rating	Water Resistance: IP65	Water Resistance: IP65	Water Resistance: IP65	Water Resistance: IP65
Power Supply	DC 12V 500mA	DC 12V 550mA	DC 12V 550mA	DC 12V 600mA
Color	White	White	White	White
POE	Internal, IEEE 802.3af	Internal, IEEE 802.3af	Internal, IEEE 802.3af	Internal, IEEE 802.3af
WDR, With IR-CUT		Yes	Yes	Yes
System Compatibility	ONVIF 2.4 Profile S/T/G	ONVIF 2.4 Profile S/T/G	ONVIF 2.4 Profile S/T/G	ONVIF 2.4 Profile S/T/G
Communication	RJ45 10M/100MB Base-T	RJ45 10M/100MB Base-T	RJ45 10M/100MB Base-T	RJ45 10M/100MB Base-T
Weight	300g	400g	400g	450g

Basic Features

- Radiant distance up to 20 M
- True H.265+ / MPEG4Real time Video Compression
- Full 8MP Resolution in live monitoring
- High Quality HD Glass Lens
- Automatic active IR LEDs
- Support Network Protocol: HTTP, TCP/IP, FTP, NTP,SMT, FTP, DHCP, DNS, PPPoE
- IP66 Weather proof Rating
- 3.6mm/ 6mm/ 12mm/ HD Lens.With IR-Cut
- Support Single, Dual, TriStream
- Motion Detection Recording Capture upload via FTP/SMTp
- Support WEB Configuration, IE Surveillance
- 3-Axis cable built-inbracket
- Main Stream And Sub Stream

OUTDOOR IP CAMERA SERIES

Basic Features

- o Radiant distance up to 20 M / 30 M
- o True H.265+ / MPEG4Real time Video Compression
- o Full 8MP Resolution in live monitoring
- o High Quality HD Glass Lens
- o Automatic active IR LEDs
- o Support Network Protocol: HTTP, TCP/IP, FTP, NTP,SMT, FTP, DHCP, DNS, PPPoE
- o IP66 Weather proof Rating
- o 3.6mm/ 6mm/ 12mm/ HD Lens.With IR-Cut
- o Support Single, Dual, Tri-Stream
- o Motion Detection RecordingCapture upload via FTP/SMT
- o Support WEB Configuration, IE Surveillance
- o 3-Axis cable built-inbracket
- o Main Stream And Sub Stream



MODEL	STIR-IB2ML2	STIR-IB5ML2	STIR-IB8ML2	STIR-IB5MZ4
Image Sensor	1/3" Sony CMOS	1/3" Sony CMOS	1/2.5" Sony Starvis	1/3" Sony CMOS
Horizontal Resolution	2 Megapixel 1920*1080	5 Megapixel 2592*1944	8 Megapixel 3840*2160	5 Megapixel 2592*1944
Solution	HISILICON Hi3516E	HISILICON Hi3516D	HISILICON Hi3516A	HISILICON Hi3516D
Lens	3.6mm / F2 .0	3.6mm / F2 .0	3.6mm / F2 .0	2.7 - 13.5mm Motorized
IR Range	14u x 18 PCS, 20 M	14u x 18 PCS, 20 M	14u x 18 PCS, 20 M	14u x 4 PCS, 40 M
Weather Proof Rating	Dust Proof Indoor	Water Resistance: IP65	Water Resistance: IP65	Water Resistance: IP65
Power Supply	DC 12V 500mA	DC 12V 550mA	DC 12V 600mA	DC 12V 600mA
Color	White	White	White	White
POE	Internal, IEEE 802.3af	Internal, IEEE 802.3af	Internal, IEEE 802.3af	Internal, IEEE 802.3af
WDR, With IR-CUT	Yes	Yes	Yes	Yes
System Compatibility	ONVIF 2.4 Profile S/T/G	ONVIF 2.4 Profile S/T/G	ONVIF 2.4 Profile S/T/G	ONVIF 2.4 Profile S/T/G
Communication	RJ45 10M/100MB Base-T	RJ45 10M/100MB Base-T	RJ45 10M/100MB Base-T	RJ45 10M/100MB Base-T
Weight	400g	400g	400g	450g

COLOR VIEW IP CAMERA SERIES



MODEL	STCV-ID2ML2	STCV-ID5ML2	STCV-ID8ML2	STCV-ID5MZ2
Image Sensor	1/2.8" SONY Starvis	1/2.8" SONY Starvis	1/2.8" SONY Starvis	1/2.8" Sony CCD
Horizontal Resolution	2 Megapixel 1920*1080	5 Megapixel 2592*1944	8 Megapixel 3840*2160	5 Megapixel 2592*1944
Solution	HISILICON HI3516E	HISILICON HI3516D	HISILICON HI3516A	HISILICON HI3516D
Lens	3.6mm / F1.0	3.6mm / F1.0	3.6mm / F1.0	2.7 - 13.5mm Motorized
Night Vision	Warm Light 4000K, 25M	Warm Light 4000K, 25M	Warm Light 4000K, 25M	Warm Light 4000K, 25M
Weather Proof Rating	Water Resistance: IP65	Water Resistance: IP65	Water Resistance: IP65	Water Resistance: IP65
Power Supply	DC 12V 500mA	DC 12V 550mA	DC 12V 600mA	DC 12V 600mA
Color	White	White	White	White
POE	Internal, IEEE 802.3af	Internal, IEEE 802.3af	Internal, IEEE 802.3af	Internal, IEEE 802.3af
WDR, With IR-CUT	Yes	Yes	Yes	Yes
System Compatibility	ONVIF 2.4 Profile S/T/G	ONVIF 2.4 Profile S/T/G	ONVIF 2.4 Profile S/T/G	ONVIF 2.4 Profile S/T/G
Communication	RJ45 10M/100MB Base-T	RJ45 10M/100MB Base-T	RJ45 10M/100MB Base-T	RJ45 10M/100MB Base-T
Weight	300g	400g	400g	450g

Basic Features

- Fixed Lens Full Color Vandal Proof Warm light/ Star light Dome Camera
- High Sensitivity 1/2.9" Progressive Scan CMOS Sensor
- Support Warm white (4000K) up to 25m
- Full Color image series
- H.265+/H.265/H.264+/H.264 Compression Method
- With Internal POE
- White Color Metal Housing
- Active Warm Light in low Brightness
- High Sensitivity Image Sensor
- Housing and Bottom Chassis Integrated
- Smart AI DNR, DWDR and Anti Ghost Effect
- Perfect Solution for Day and Night Color Pitcher Applications
- Saturation/Brightness/Contrast/Sharpness, Mirror,
- 3D NR, White Balance, Flicker Control
- 1080P Ultra High Resolution above 2 Megapixel
- Excellent Color Picture

COLOR VIEW OUTDOOR IP CAMERA

Basic Features

- Fixed Lens Full Color Vandal Proof Warm light/ Star light Dome Camera
- High Sensitivity 1/2.9" Progressive Scan CMOS Sensor
- Support Warm white (4000K) up to 25m
- Full Color image series
- Adopt "Special Optical Low Pass Filter
- H.265+/H.265/H.264+/H.264 Compression Method
- With Internal POE
- Active Warm Light in low Brightness
- High Sensitivity Image Sensor
- Housing and Bottom Chassis Integrated
- Smart AI DNR, DWDR and Anti Ghost Effect
- Perfect Solution for Day and Night Color Pitcher Applications
- Saturation/Brightness/Contrast /Sharpness, Mirror, 3D NR ,
- White Balance, Flicker Control
- 1080P Ultra High Resolution above 2 Megapixel
- Excellent Color Picture
- White Color Metal Housing



MODEL	STCV-IB2ML2	STCV-IB5ML2	STCV-IB8ML2	STCV-IB5MZ4
Image Sensor	1/2.8" SONY Starvis	1/2.8" SONY Starvis	1/2.8" SONY Starvis	1/2.8" Sony CCD
Horizontal Resolution	2 Megapixel 1920*1080	5 Megapixel 2592*1944	8 Megapixel 3840*2160	5 Megapixel 2592*1944
Solution	HISILICON Hi3516E	HISILICON Hi3516D	HISILICON Hi3516A	HISILICON Hi3516D
Lens	3.6mm / F1.0	3.6mm / F1.0	3.6mm / F1.0	2.7 - 13.5mm Motorized
Night Vision	Warm Light 4000K, 25M	Warm Light 4000K, 25M	Warm Light 4000K, 25M	Warm Light 4000K, 25M
Weather Proof Rating	Water Resistance: IP67	Water Resistance: IP67	Water Resistance: IP67	Water Resistance: IP67
Power Supply	DC 12V 500mA	DC 12V 550mA	DC 12V 600mA	DC 12V 600mA
Color	White	White	White	White
POE	Internal, IEEE 802.3af	Internal, IEEE 802.3af	Internal, IEEE 802.3af	Internal, IEEE 802.3af
WDR, With IR-CUT	Yes	Yes	Yes	Yes
System Compatibility	ONVIF 2.4 Profile S/T/G	ONVIF 2.4 Profile S/T/G	ONVIF 2.4 Profile S/T/G	ONVIF 2.4 Profile S/T/G
Communication	RJ45 10M/100MB Base-T	RJ45 10M/100MB Base-T	RJ45 10M/100MB Base-T	RJ45 10M/100MB Base-T
Weight	300g	400g	400g	450g

SWITCHING MODE POWER SUPPLY

INDIVIDUAL OUTPUT SMPS

- Input Voltage 150-285VAC 50-60Hz
- Output Voltage 12VDC-1Amp Each Channel
- Stabilize outputs & low interference
- Short Circuit & overload protection
- Over temperature protection
- Surge protection
- Over current & over voltage protection
- High efficiency & low energy consumption
- Individual power drive & Power LED indicator
- Low ripple voltage
- Short circuit auto restart
- Highly integrated SMPS Switcher I.C design



4 Channel



8 Channel



16 Channel

SINGLE OUTPUT ADAPTER

- Input Voltage / Frequency 100-240VAC 50-60Hz
- Output Voltage 12VDC
- Circuit Breakers Auto Reset Hiccup
- Working Humidity 20~90% RH non-condensing
- Available in wattages 24W to 60W
- Available in white and black finishes
- Fanless design /cooling by free-air convection
- Power LED Indicator
- Short Circuit & overload
- Over temperature protection



36Watts



24Watts



60Watts

ACCESSORIES

BNC Male & Female Connector



DC Male & Female Connector



VGA CABLE



T-CONNECTOR



BNC Male / 2 BNC Female Connector



HDMI CABLE



SURGE PROTECTOR



EM LOCK



VIDEO BALLOON



Desktop Type Power Supply



Weather Proof Supply



CCTV Cable



Dome Camera stand



Bullet Camera Stand



HDMI Extender



LCD Stand 3 Axis



AUDIO MIC



Network Rack



CO - BOX



Electric Lock



USB Cable



Patch Cord



RJ-45 Connector



USB Extender



CURRENCY COUNTING MACHINE



INX-2010E

- Fully automatic money counter and detector
- With big front LED and button
- Automatic detecting with ultraviolet and magnetic while counting
- Automatic start stop and self examination functions
- Suitable for most currencies in the world



INX-4000T

- Automatic start stop and clear
- With UV MG IR 3D color detection while counting
- Automatic half note chained note double note detection
- With batch add on self examination
- Function Mix value counting for
- Indian Rupee and show pieces of each denomination software can be updated through Rs 232 port



INX-4010T

- Automatic start stop and clear
- With UV MG IR 3D color detection while counting
- Digital Side Display
- Automatic half note chained note double note detection
- With batch add on self examination
- Function Mix value counting for
- Indian Rupee and show pieces of each denomination software can be updated through Rs 232 port.



INX-4040T

- Automatic start stop and clear
- With UV MG IR 3D color detection while counting
- 2.0 Inch Side Display
- Automatic half note chained note double note detection
- With batch add on self examination
- Function Mix value counting for
- Indian Rupee and show pieces of each denomination software can be updated through Rs 232 port

PROFESSIONAL CAMERA SERIES



PTZ Camera HD/ IP

- 33x Optical Zoom, Indoor / Outdoor
- Compound Movement make the speed dome reach preset in shortest route
- 100 presets, horizontal turning speed reaches 250°/sec.
- Continues turning with no blind area
- Optional Ceiling Mount
- Perfect Solution for Day / Night Applications
- High Sensitivity SONY Technology CMOS Sensor
- Adopt "Special Optical Low Pass Filter"
- High Sensitivity Sensor, Excellent Picture Quality
- IR Cut Filter, Auto Color & Mono Switching in low light
- IP 68 with vandal proof glass



Smart Wifi Camera

- Plastic WiFi IPC Camera
- Horizontal Rotation Range: 0~355°
- Tilt Rotation Range: 0~60°
- Audio 2-Way Audio
- Alarm Motion Detection
- SD Card Slot Support Max 128G
- WIFI Range: No obstacles 350M Max



ANPR Solution

- ANPR system supports Black/White List Management and can automatically recognize license plates, compare to a predefined list, then take real-time actions, such as controlling the barrier or generating an alert
- Built-in License Plate Recognition Algorithm.
 - International Plate Support. Recognition. Accuracy >95%
 - License Plate Recognition. (Up to 90KM/H) ...
 - Speed Detection. (Up to 100 KM/H) Traffic Flow Detection. ...
 - Vehicle Type Recognition. (car, bus, truck, etc.)
 - Captures images of vehicles travelling at high speed
 - 24 hour round the clock operation
 - High accuracy (99%)
 - Logs vehicles with multiple overview camera images
 - 1/3" progressive scan sensor
 - Resolution : 2MP or better
 - Powerful 5-50mm lens
 - IP66 and superior performance for outdoor applications
 - True Super WDR technology
 - Global Electronic Shutter



Smart 4G Wifi IP Camera

- 4G SIM Based Standalone IP 3MP/20Mtr
- Two way audio communication Built-in High Sensitivity Speaker and Mic.
- SD Card Support upto 128GB Support cloud storage
- Hotspot connection, can view and video playback without internet
- Intelligent human detection algorithm for effective alarms
- Simple and Easy to Setup and Access Through App
- Any 4G/3G SIM card supported

5MP H265+ DVR SERIES

Basic Features

- H.265+ High compression standalone DVR
- 1080P High Resolution
- VGA / HDMI Output with High Definition
- Picture Quality: Graphic respectively comparing its picture size
- Support Dual encoding streams
- Quick Search video files and easy to playback
- 1 SATA Hard Disk interface Up to 8TB
- Support Static & Dynamics IP address
- Live Color Reproduction by Improved Color Processing F Digital Image Stabilizing Technology
- Auto Maintenance
- P2P No Router No Port Forwarding Needed
- RJ45 10M/100M Auto-adapt Ethernet port
- Will Work on Embedded Linux operating system
- Recorded Play back on Mobile & Windows
- A powerful mobile monitoring features to support i-Phone, Android Systems & Windows



MODEL	STVR-5M04D1	STVR-5M08D1	STVR-5M16D1	STVR-5M32D4
Video In / Out	4CH BNC in / 1CH HDMI, VGA & CVBS Out	8CH BNC in / 1CH HDMI, VGA & CVBS Out	16CH BNC in / 1CH HDMI, VGA & CVBS Out	32CH BNC in / 1CH HDMI, VGA & CVBS Out
Audio In / Out	RCA 2CH In / 1CH Out	RCA 2CH In / 1CH Out	RCA 2CH In / 1CH Out	RCA 2CH In / 1CH Out
Display Split	9/1/4	16/9/8/4/1	16/9/8/4/1	32/25/16/9/8/4/1
Resolution	5MP (1296x1952) 12fps	5MP (1296x1952) 12fps	5MP (1296x1952) 12fps	5MP (1296x1952) 12fps
Record Mode	Manual/timer/motion/ AI Alarm	Manual/timer/motion/ AI Alarm	Manual/timer/motion/ AI Alarm	Manual/timer/motion/ AI Alarm
Network Support	Static, Dynamic IP and DDNS, DNS, UPNP	Static, Dynamic IP and DDNS, DNS, UPNP	Static, Dynamic IP and DDNS, DNS, UPNP	Static, Dynamic IP and DDNS, DNS, UPNP
Hard Disk	1 SATA Interface Up to 8TB	1 SATA Interface Up to 8TB	1 SATA Interface Up to 8TB	4 SATA Interface Up to 8TB
Backup	2*USB2.0 and Network	2*USB2.0 and Network	2*USB2.0 and Network	2*USB2.0 and Network
Interface	RS485, Pelco-D, Pelco-P	RS485, Pelco-D, Pelco-P	RS485, Pelco-D, Pelco-P	RS485, Pelco-D, Pelco-P
Compression	H.264+H.265,H.265+	H.264+H.265,H.265+	H.264+H.265,H.265+	H.264+H.265,H.265+
Power Supply	DC12V/2A	DC12V/2A	DC12V/2A	DC12V/5A

ULTIMATE 4K DVR

Basic Features

- H.265+ High compression standalone DVR
- Ultimate 4K Extra High Resolution
- HDMI / VGA Output with High Definition Picture Quality:
- Graphic respectively comparing its picture size
- Support 4K full real time recording encoding
- Support Dual encoding streams
- Support six operations at the same time, recording, playback, network transmission, backup, mobile monitoring
- Support internet Explorer and special client software
- Quick Search video files and easy to playback
- Each interface can support HDD with maximum capacity of 8 TB
- Support Static & Dynamics IP address
- Live Color Reproduction by Improved Color Processing Digital Image Stabilizing Technology
- P2P No Router No Port Forwarding Needed
- Will Work on Embedded Linux operating system
- A powerful mobile monitoring Recorded Play back on Mobile & Windows



MODEL	STVR-4K04C1	STVR-4K08C1	STVR-4K16C2	STVR-4K32C8
Video In / Out	4CH BNC in / 1CH HDMI, VGA & CVBS Out	8CH BNC in / 1CH HDMI, VGA & CVBS Out	16CH BNC in / 1CH HDMI, VGA & CVBS Out	32CH BNC in / 1CH HDMI, VGA & CVBS Out
Audio In / Out	RCA 2CH In / 1CH Out	RCA 2CH In / 1CH Out	RCA 2CH In / 1CH Out	RCA 2CH In / 1CH Out
Display Split	9/1/4	16/9/8/4/1	16/9/8/4/1	32/25/16/9/8/4/1
Resolution	4K 3840 x 2160P 15fps	4K 3840 x 2160P 15fps	4K 3840 x 2160P 15fps	4K 3840 x 2160P 15fps
HDMI Output	3840 x 2160P / 30Hz	3840 x 2160P / 30Hz	3840 x 2160P / 60Hz	3840 x 2160P / 60Hz
Record Rate	PAL: 8MP (1920x2160) 12fps	PAL: 8MP (1920x2160) 12fps	PAL: 8MP (1920x2160) 12fps	PAL: 8MP (1920x2160) 12fps
Record Mode	Manual/timer/motion/ AI Alarm	Manual/timer/motion/ AI Alarm	Manual/timer/motion/ AI Alarm	Manual/timer/motion/ AI Alarm
Network Support	Static, Dynamic IP and DDNS, DNS, UPNP	Static, Dynamic IP and DDNS, DNS, UPNP	Static, Dynamic IP and DDNS, DNS, UPNP	Static, Dynamic IP and DDNS, DNS, UPNP
Hard Disk	1 SATA Interface Up to 8TB	1 SATA Interface Up to 8TB	2 SATA Interface Up to 16TB	8 SATA Interface Up to 16TB
Backup	2*USB2.0 and Network	2*USB2.0 and Network	2*USB2.0 and Network	2*USB2.0 and Network
Interface	RS485, Pelco-D, Pelco-P	RS485, Pelco-D, Pelco-P	RS485, Pelco-D, Pelco-P	RS485, Pelco-D, Pelco-P
Compression	H.264+H.265,H.265+	H.264+H.265,H.265+	H.264+H.265,H.265+	H.264+H.265,H.265+
Power Supply	DC12V/2A	DC12V/2A	DC12V/4A	DC12V/10A

NETWORK VIDEO RECORDER (NVR)

Basic Features

- Exclusive Linux-embedded system
- Third party network cameras supported
- Real time monitoring and recording (video/audio) from multiple network cameras
- Supports streaming from network cameras and servers
- Supports 12 megapixel recording HD and VGA Output, HD Port up to 4K (3840*2160)
- Complete recording features: schedule recording, alarm recording schedule, motion-detection recording,
- Support 1 SATA Hard Disk interface Up to 16TB storage
- Smart search of IP cameras for quick configuration
- Digital Zoom for monitoring and playback
- The display order of the monitoring channels can be changed by drag and drop
- Multi-channel playback at different speed Support remote view by i-Phone, Android Systems & Windows. Up to 12MP Resolution Recording and Playback



MODEL	STNR-4K09D1	STNR-4K16D1	STNR-8K36D2	STNR-8K64D8
Video In / Out	IP Camera 9CH in/ 1 CH VGA & HDMI Out	IP Camera 16CH in/ 1 CH VGA & HDMI Out	IP Camera 36CH in/ 1 CH VGA & HDMI Out	IP Camera 64CH in/ 1 CH VGA & 2 HDMI Out
Audio In / Out	RCA 1CH In / 1CH Out	RCA 1CH In / 1CH Out	RCA 1CH In / 1CH Out	RCA 2CH In / 1CH Out
Display Split	9/1/4	16/9/8/4/1	32/25/16/9/8/4/1	32/25/16/9/8/4/1
Resolution	4K 3840 x 2160/30Hz	4K 3840 x 2160/30Hz	12MP@25x25 fps	12MP@25x25 fps
Bandwidth	Incoming 80MP	Incoming 80MP	Incoming 300MP	Incoming 300MP
Record Rate	PAL: 4K@8x25fps	PAL: 4K@8x25fps	PAL: 12MP@ 25x25fps	PAL: 12MP@ 29x25fps
Record Mode	Manual/timer/motion/ AI Alarm	Manual/timer/motion/ AI Alarm	Manual/timer/motion/ AI Alarm	Manual/timer/motion/ AI Alarm
Network Support	Static, Dynamic IP and DDNS, DNS, UPNP etc..	Static, Dynamic IP and DDNS, DNS, UPNP etc..	Static, Dynamic IP and DDNS, DNS, UPNP etc..	Static, Dynamic IP and DDNS, DNS, UPNP etc..
Hard Disk	1 SATA Interface Up to 8TB	1 SATA Interface Up to 8TB	2 SATA Interface Up to 16TB	8 SATA Interface Up to 48TB, 1*eSATA
Backup	2*USB2.0 and Network	2*USB2.0 and Network	2*USB2.0 and Network	2*USB3.0 and Network
Interface	RJ45 10/100M Adaptive Ethernet	RJ45 10/100M Adaptive Ethernet	RJ45 10/1000M Adaptive Ethernet	2*RJ45 10/1000M Adaptive Ethernet
Compression	H.264+H.265,H.265+	H.264+H.265,H.265+	H.264+H.265,H.265+	H.264+H.265,H.265+
Power Supply	DC12V/2A	DC12V/2A	DC12V/5A	DC12V/10A

DC BACKUP POWER SUPPLY



12V-6A, 4 Cameras +DVR (Single Battery)

- DC Variable Output Working up to
- Around 3 Hours in day mood & 2 Hours in night mode.



12V-10A, 8 Cameras +DVR (Single Battery)

- DC Variable Output Working up to 50+ Meters.
- Around 2 Hours in day mood & 1 Hours in night mode.

Input Voltage
Output Voltage
Output Current

- 100 - 300 V AC
- 12 V - 14.50 V
- 6Amp

- 100 - 300 V AC
- 12 V - 14.50 V
- 10Amp



12V-10A, 8 Cameras +DVR (Double Battery)

- Variable Output Working up to 90+ Meters.
- Around 3 Hours in day mood & 2 Hours in night mode.



12V-20A, 16 Cameras +DVR (Double Battery)

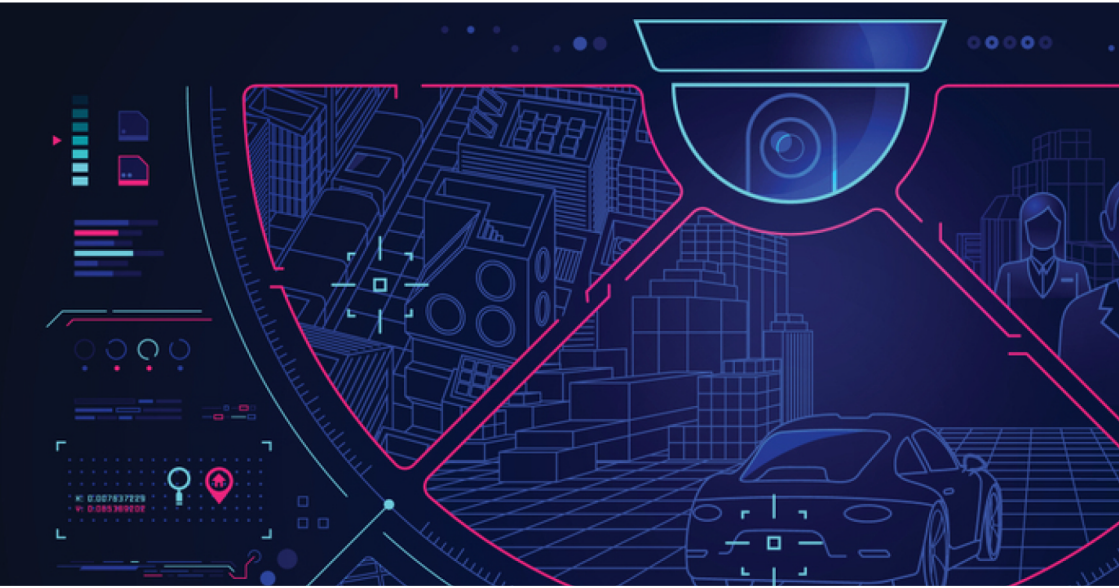
- Variable Output Working up to 90+ Meters.
- Around 2 Hours in day mood & 1 Hours in night mode.

Input Voltage
Output Voltage
Output Current

- 100 - 300 V AC
- 12 V - 14.50 V DC
- 10Amp

- 100 - 300 V AC
- 12 V - 14.50 V DC
- 20 Amp

PRODUCT CATALOGUE



Dealer Stamp



TECHNOLOGY

www.ssttechnology.co.in



**Technical
Support**

+91 9882 313 213



**Customer
Care**

+91 4832 960 170



**Mobile
Support**

+91 9882 313 213



**E-mail
Service**

info@ssttechnology.co.in



**Live Video
Support**

[sstsupportcare](https://sstsupportcare.com)